

Syncroline

Single and centering vise, also for 5-sided machining.
Versatile application on all machines.

- > Strong body of spheroidal graphite iron GJS-600
- > Patented quick change jaws
- > Step ledges for "clicking in"
- > Screw-on "grip" ledges
- > Optimum chip protection of the spindle through patented scraping technology
- > Alignment possible through longitudinal and lateral grooves, as well as infeed systems

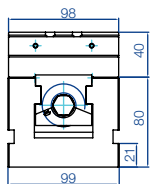
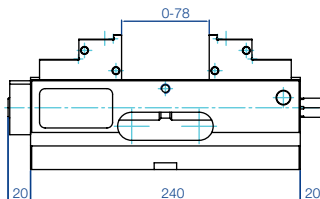
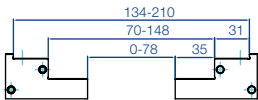
Scope of delivery:

4 clamping claws



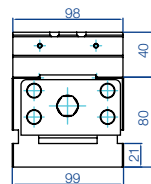
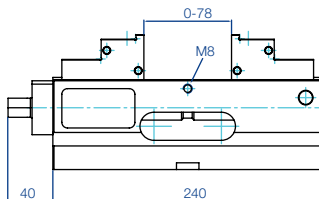
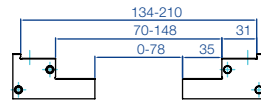
1 Centering

| | | | |
|------------------|-----------------|-------|------------|
| Order no. | 04.25.270.001.1 | | |
| at | 20 Nm | 60 Nm | max.115 Nm |
| Clamping force: | 5 kN | 15 kN | max. 30 kN |



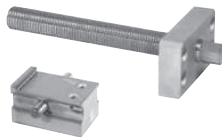
2 Single

| | | | |
|------------------|-----------------|-------|------------|
| Order no. | 04.25.271.001.1 | | |
| at | 20 Nm | 40 Nm | max.80 Nm |
| Clamping force: | 9 kN | 17 kN | max. 35 kN |

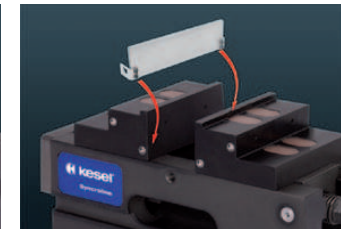


Conversion kits

For conversion from single to centering vise
Order no.: 03.25.270.001.2



For conversion from centering to single vise
Order no.: 03.25.271.001.2

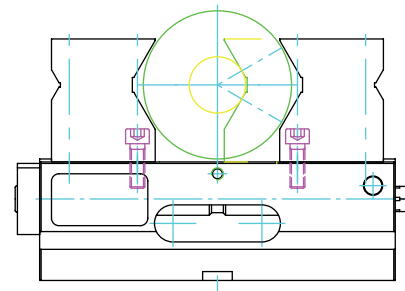


Jaws quick release system

- > Quick rotation or change of the serial top jaws (it is only necessary to turn and open 2 fastening screws)
- > Quick replacement of custom jaws produced in-house

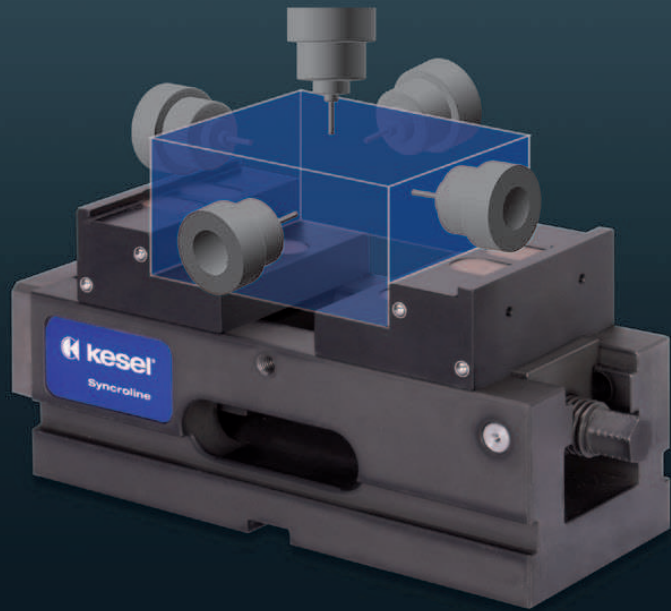
Step ledge quick release system

- > Step ledges are simply "clicked" in by hand, with no need for tools
- > No penetration of chips beneath the step ledge
- > Secure and stable hold, also with the use of compressed air
- > Available in a range of heights (accessories)



With prism jaw (optional)

> Clamping range $\varnothing 17 - \varnothing 100$ mm



SYNCROLINE accessories



Step ledges

| For size | Order no. | Height |
|----------|-----------------|--------|
| 100 | 03.25.270.001.9 | 15 |
| 100 | 03.25.270.002.9 | 35 |



Torque wrench

| For size | Order no. | Setting range Nm |
|----------|-----------------|------------------|
| 100 | 70.26.007.202.9 | 20-100 |



Grip ledges

| For size | Order no. | Clamping depth |
|-------------------------------|-----------------|----------------|
| 100 - for jaw tall face | 01.25.270.070.3 | 2 |
| 100 - for jaw stepped face | 01.25.270.071.3 | 2 |
| 100 - for jaw horizontal face | 01.25.270.072.3 | 2 |



Sub-base

| For size | Order no. | kg | Height | Length |
|----------|-----------------|----|--------|--------|
| 100 | 01.25.270.020.3 | 14 | 80 | 240 |



Operating key

| Size | Order no. |
|------|-----------------|
| 100 | 32.25.270.004.9 |



Prism jaw

| For size | Order no. | Diameter | Height | Length |
|----------|----------------|----------|--------|--------|
| 100 | 02.26.270.0000 | ø 17-100 | 83 | 70 |